

Building/ Residential

Multi-family building with housing units and commercial premises in Girona.

Client

Cimexco, S.A.

Cost

€7,665,000.00 (excluding VAT)

Location

Girona

Work period

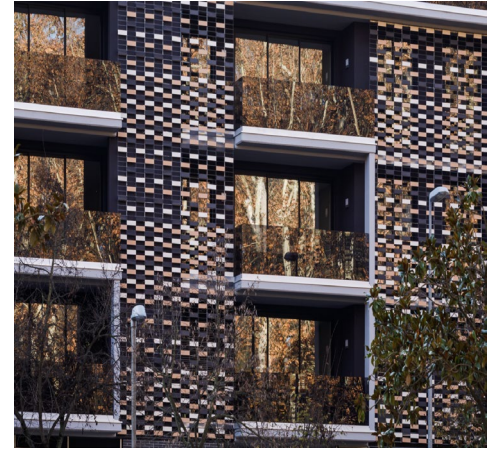
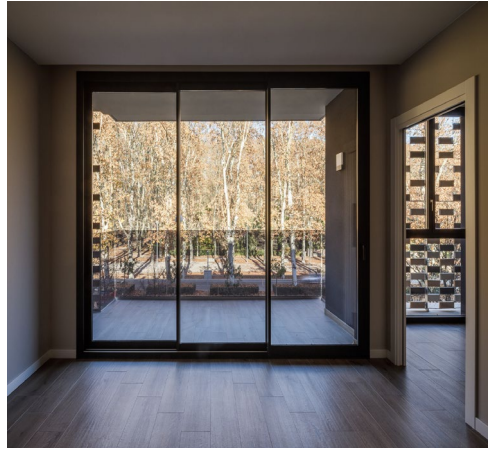
February 2020 to November 2021

Architects

BR29 Architects

Scope

Construction of a six-storey building containing 32 flats with three and four bedrooms, commercial premises and car parking next to La Devesa Park.



Description of the work

Located at 2-3 Carrer de Riu Güell in the city of Girona, the new building enjoys privileged views over La Devesa Park.

The project occupies a total built area of 10,322.90 m², upon which 32 homes, three commercial premises and

an underground car park with storage rooms have been built. There is also a communal area with a swimming pool and solarium with artificial grass.

The building has been constructed between dividing walls and is made up of six storeys above ground (ground floor + 5).

Main service details

Structural elements

Reinforced concrete foundations and structure.

Façade

ETIS system, main sheet of perforated brick, exterior insulation with rigid panel and single-layer mortar cladding.

Partitioning

Partition with ceramic brick wall, panelling with laminated plasterboard half partitions, thermal and acoustic insulation with rock wool inside the panelling structure.

Lighting in common areas

Combined motion and photocell detectors.

Exterior carpentry

Lacquered aluminium with thermal break and double glazing with high energy efficiency inner chamber.

Vestibules

Access by proximity detector card and automatic opening.