



Facility Management / Maintenance of buildings and equipment

Comprehensive services for the premises of Cementiris de Barcelona: improvement and upgrade works on Sarrià Cemetery

Client

Cementiris de Barcelona, S.A.

Location

Barcelona

Period of service

2020 - 2022

Scope

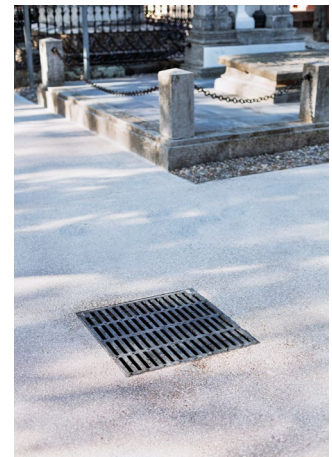
Upgrade and improvement works on Sarrià Cemetery, within the framework of the comprehensive services contract for the premises of Cementiris de Barcelona. The scope of the work carried out consisted of upgrading access to the site, improving the drainage and sanitation systems and improving the flowerbeds and dirt paths.



Drainage paving in complex wooded areas.



Naturasfalt paving with the polished Boulevard finish and improving flowerbeds and area of graves and mausoleums.



New sanitation and water collection system.

Description of the work

Located in the neighbourhood of Les Tres Torres in Barcelona, Sarrià Cemetery, which dates back more than 100 years, remains the small village cemetery that it has been since it first opened, preserving the intimate and simple character it has always exuded.

With a view to maintaining this essence, a Naturasfalt paving solution was chosen. This innovative system from Sorigué reveals the natural stone of the asphalt, enhancing the inner beauty of the material thanks to its polish, achieving better integration with the surroundings and a substantial improvement in terms of functionality and maintenance.

In the wooded areas with problems caused by large

roots, a drainage paving was used that will help the water to filter down into the subsoil and prevent the roots from breaking the surface, causing deformations in the pavement.

A new sanitation and water drainage network has been built to keep the paths in optimal conditions for the transit of people visiting or passing through the cemetery. The drinking water supply pipes for the cemetery's services have also been replaced.

The flowerbeds and grave and mausoleum areas have been separated from the paths and clearly defined, providing an overall clean and ordered aesthetic.

Main details of the work

Earth excavation by manual and mechanical means	133 m ³
Installation of the drainage and sanitation pipe network	207 m
Installation of the drinking water network	115 m

Galvanised sheet steel plate 100×10 mm	310 m
Asphalt pavement base	1,482 m ²
Synthetic ochre Naturasfalt paving with polished Boulevard finish	1,482 m ²