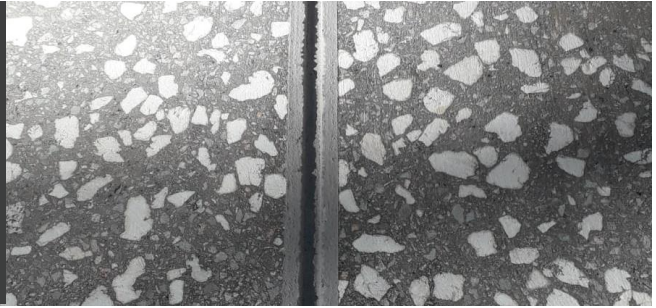


## FIRCUT

This system breaks away from the monotony of continuous paving to give surfaces a unique finish.



### Decorative finish for continuous paving

Fircut is a finishing system for continuous paving which uses a specially designed machine. The cut is carried out by means of a precision disc cutter on the asphalt surface layer of the paving, allowing an original design to be achieved.



### Main features

- Cut with a precision disc with a width and depth of approximately 9 mm.
- It is advisable to apply Firbond-Pu colour treatment on a 1 cm excess and on the cut itself to improve resistance and ensure a good finish and durability.
- Endless design possibilities by combining straight, crossed and curved cuts.
- Breaks the monotony of continuous paving.