

FIRBOND-PU

Surface treatment for designs in various colours to render roads non-slip and fuel-resistant.



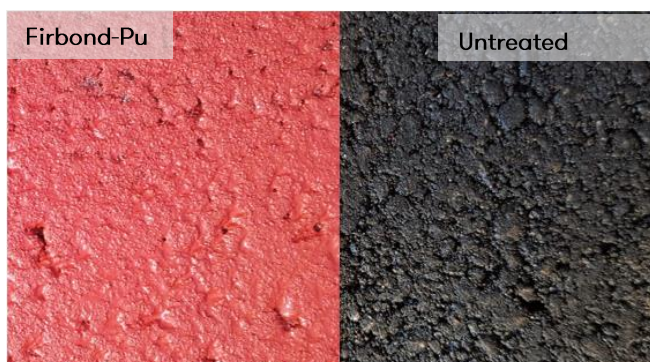
Pavement with a coloured design

Firbond-Pu is a road surface finishing system which consists of applying resin onto flexible and rigid paving, making the roads non-slip and fuel-resistant.

PU resin

The treatment is composed of a hybrid polyurethane-based resin and a mineral filler with extremely hard aggregates, bauxite and calcined cristobalite to provide excellent hardness and slip resistance.

This resin is a water-resistant, flexible material which maintains its flexibility performance and provides high resistance to wear and tear and traffic stress.



Main features

- Applied in two uniform layers with a total coverage of approximately 1.3 kg/m² depending on the surface
- Can be applied on flexible and rigid paving
- High resistance to wear and tear and traffic stress
- Can be applied on asphalt or concrete surfaces
- Opening to traffic in 6-8 hours
- High UV-resistant pigments
- Non-slip
- Fuel-resistant
- Decorative

Customisable colours

The personalised design allows for a wide variety of colours to offer better lane visibility and decorative designs for pavements.

Long-lasting colour is guaranteed, especially against UV light. This product complies with the current non-slip requirements for road traffic, high capacity roads and pedestrian traffic.

Oxide yellow R-1006	Golden yellow R-1004	Brown beige R-1011	Emerald green R-6001	Mint green R-6029
Orange brown R-8023	Copper brown R-8004	Clay brown R-8003	Terra brown R-8028	Grey brown R-8019
Light grey R-7004	Cement grey R-7033	Graphite R-7026	Black R-9017	Sky blue R-5015
Terracotta red R-4002	Coral red R-3016	Oxide red R-3009	Basalt grey R-7012	Brilliant blue R-5007
Signal blue R-5005	Traffic grey R-7043	Traffic white R-9016	Traffic yellow R-1023	Traffic red P500 R-3020



Application

The surface must be clean, dry and free from waste, dust and contamination.

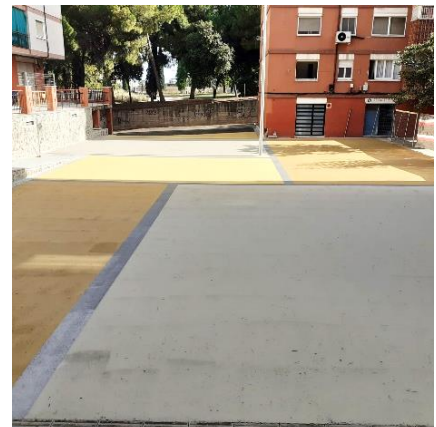
For concrete surfaces, the pore or texture must be opened and binder resin must be used.

The application temperature is between 10°C and 30°C.

A layer of resin is applied to the surface at a rate of 0.6-0.7 kg/m² using a paint sprayer (A) and it is left to dry for between 30 and 50

minutes, depending on the ambient temperature. A second layer is then applied at the same rate to reach a final coverage of 1.3 kg/m² (B and C).

The road can be opened to traffic between 6 and 8 hours after application, depending on the ambient temperature.



Properties

Resin	Polyurethane
Application temperature	10oC – 30oC
Mix duration/treatment time at 20oC	30-50 min
Drying time at 20oC	6-8 h
Tensile strength (ASTM)	30.45 kg/ cm ²
Elastic modulus at 20oC	8.17 kg/cm ²
CS-17 Taber abrading wheels, 1 kg, 1000 cycles	75 mg
Viscosity at 25oC	-
Density at 25oC	1.40 g/cm ³