

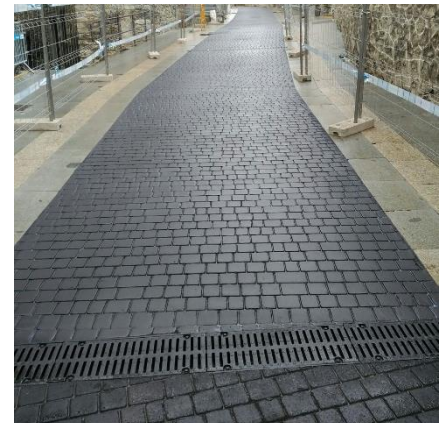
## STAMPED ASPHALT

A versatile pavement finishing system as many designs can be stamped onto a hot bituminous mix.



### Asphalt with a wide range of uses

Stamped asphalt is a stamping system with various customisable designs for asphalt paving and which is able to recreate different types of finishes. It is finished off with Firbond-Pu colour treatment, which is both non-slip and fuel-resistant.



### Main features

- Finishing system offering a functional alternative to paving stones or prefabricated pieces.
- Thanks to the flexibility of the asphalt mix, this system guarantees greater stability and durability than prefabricated pieces and is more resistant to fissures and cracks.
- The stamped pieces do not move under the stress of traffic.
- Improved properties of prefabricated pavement while maintaining the designs.
- Non-slip and fuel-resistant Firbond-Pu colour treatment.
- Wide variety of customisable designs and colours for every situation.
- Simple application and fast opening to traffic.
- Easier and quicker to repair and maintain.

### Application and uses

The Firprint hot bituminous mix (AC 8 surf PMB 45/80-65 D), specifically designed to optimise the system, is spread before the chosen design is stamped.

The mesh is placed on top of the pre-compacted asphalt and then the chosen design is stamped using a vibratory plate.

Finally, non-slip and fuel-resistant Firbond-Pu colour treatment is applied to colour and protect the surface.



### Completed projects

This system has endless applications thanks to its versatility:

- Reconstruction of areas with deteriorated pre-fabricated pieces
- Pedestrian pavements and paths
- Car parks
- 30 km/h areas
- Overpasses and pedestrian bridges
- Parks
- Residential areas
- Road traffic areas

